

# VENUS

## Planetary Hot Spot

Distance From Sun

67,683 Mil

Length Of Year

225 Earth Days

One Way Light Time

To The Sun

6.055 Mins



Planet Type

Terrestrial

## 10 Need-to-Know Things About Venus

1

### EARTH-SIZED

If the sun were as tall as a typical front door, the Earth and Venus would each be about the size of a nickel.

2

### SECOND ROCK

Venus orbits our Sun, a star. Venus is the second closest planet to the sun at a distance of about 67 million miles (108 million km).

3

### A DAY LONGER THAN A YEAR

One day on Venus lasts 243 Earth days because Venus spins backwards, with its sun rising in the west and setting in the east.

4

### DIVERSE TERRAIN

Venus' solid surface is a volcanic landscape covered with extensive plains featuring high volcanic mountains and vast ridged plateaus.

5

### MOONLESS AND RINGLESS

Venus has no moons and no rings.

6

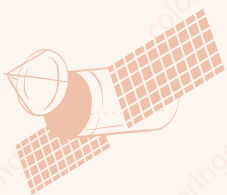
### GREENHOUSE EFFECT

The planet's surface temperature is about 900 degrees Fahrenheit (465 degrees Celsius) hot enough to melt lead.

7

### WATER ON VENUS

Many scientists believe water once existed on the surface. Future Venus explorers will search for evidence of an ancient ocean.



8

### MANY VISITORS

More than 40 spacecraft have explored Venus. The '90s Magellan mission mapped the planet's surface and Akatsuki is currently orbiting Venus.

9

### LIFE ON VENUS

Venus' extreme temperatures and acidic clouds make it an unlikely place for life as we know it.

10

### SUPER ROTATING ATMOSPHERE

While the surface rotates slowly, the winds blow at hurricane force, sending clouds completely around the planet every five days.



Source: nasa.gov